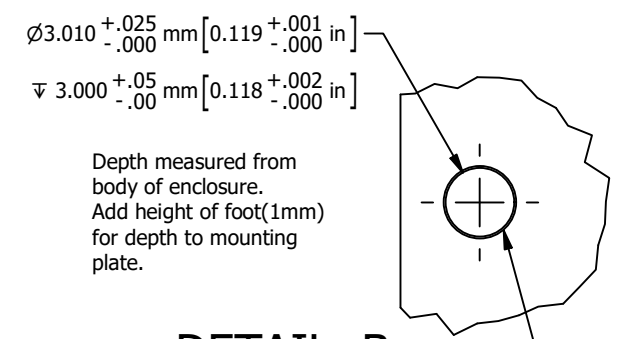
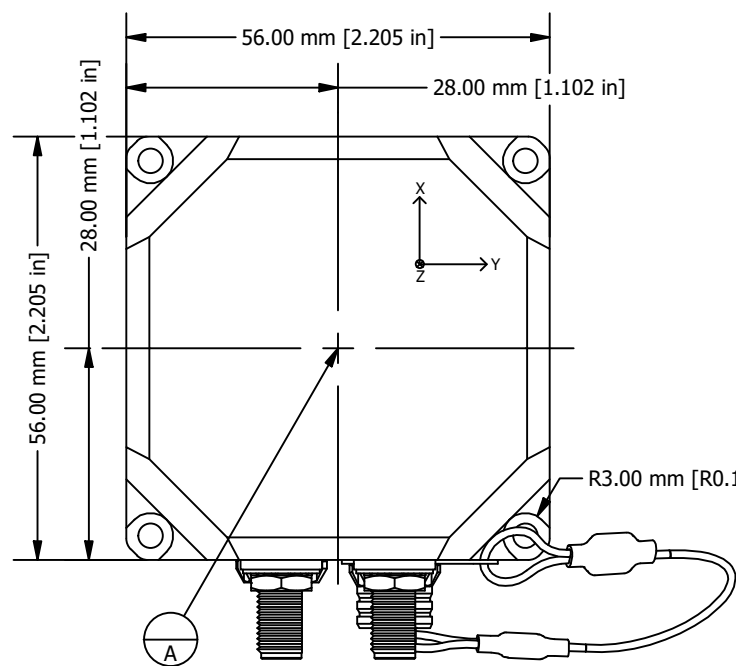
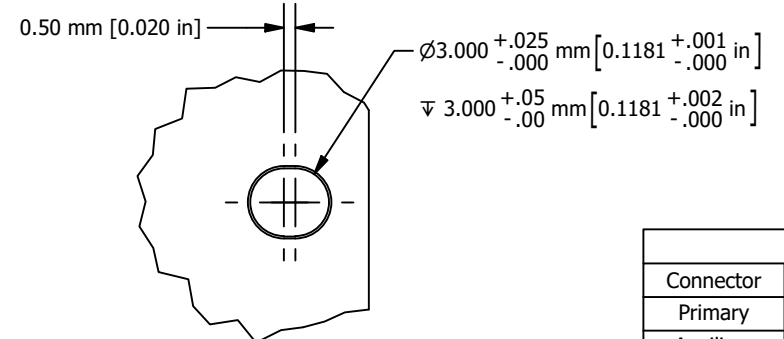


10 9 8 7 6 5 4 3 2 1



DETAIL B
SCALE 3 : 1

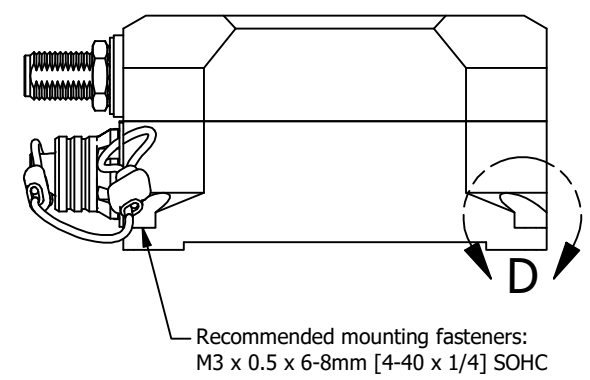
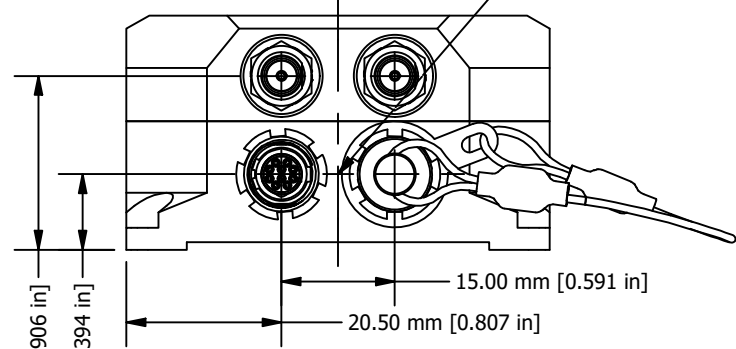


DETAIL C
SCALE 3 : 1

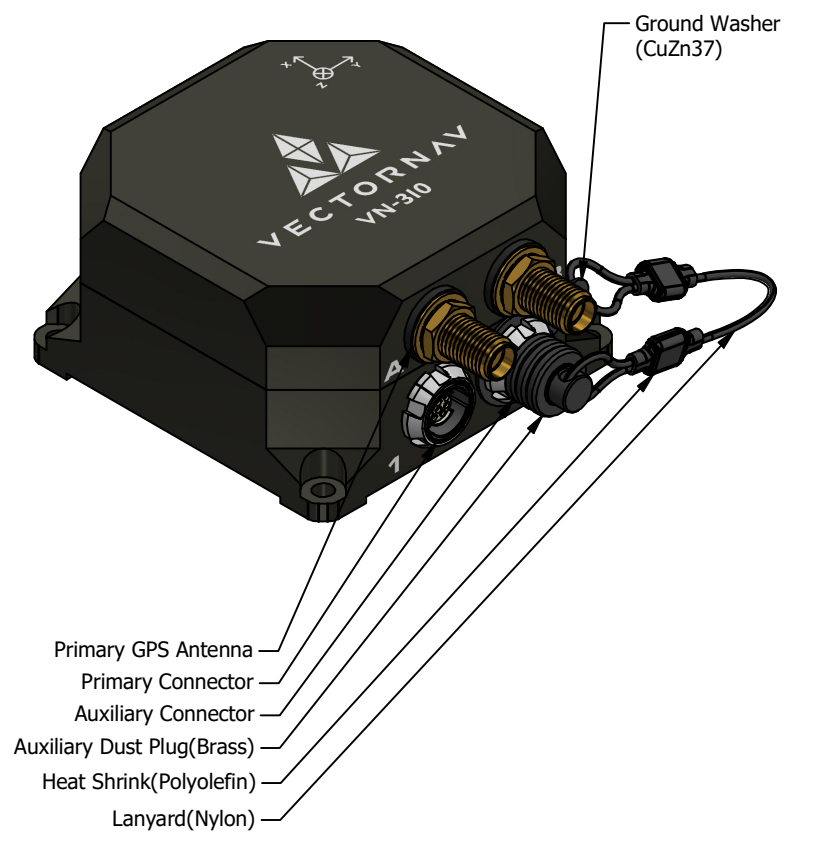
CONNECTORS DESCRIPTION		
Connector	Purpose	Voltage
Primary	Input power & primary RS-422 communications	12 - 34 V
Auxiliary	Optional output power and RS-422 for auxiliary sensors	12 - 34 V
GPS	GPS RF input with 5V output to power active antenna	5V ±0.1V

CONNECTORS			
Connector	Manufacturer	P/N	Mating P/N
Primary	Fischer	UR02W07F010PBK3E2AB	UP01L07M010SBK3Z2ZB
Auxiliary	Fischer	UR02W07F010PBK1E2AB	UP01L07M010SBK1Z2ZB
GPS	Samtec	MH113-01SB1-MH1RP-0050	STRAIGHT SMA PLUG

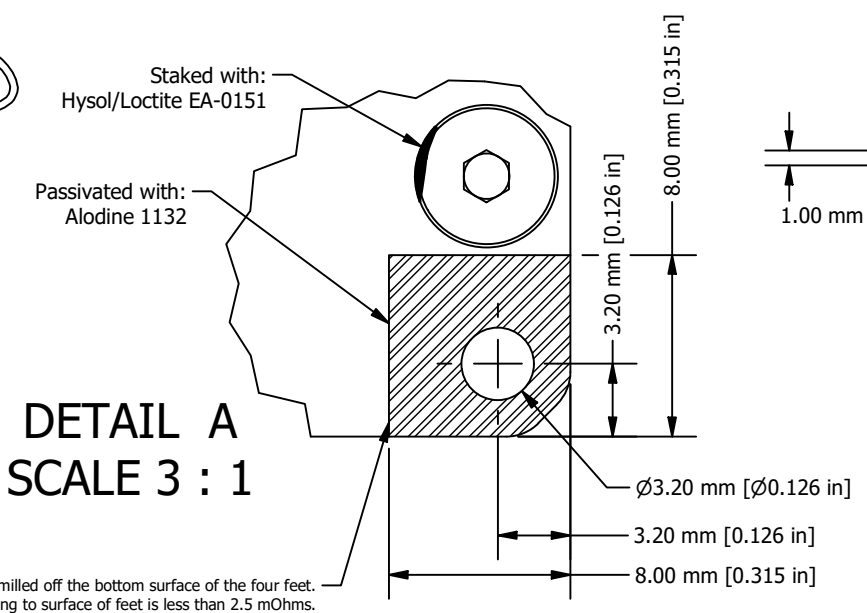
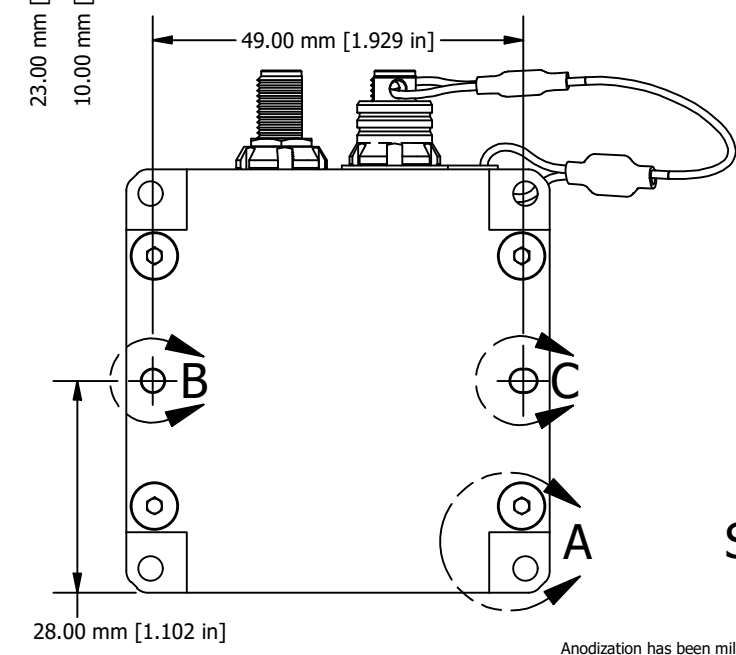
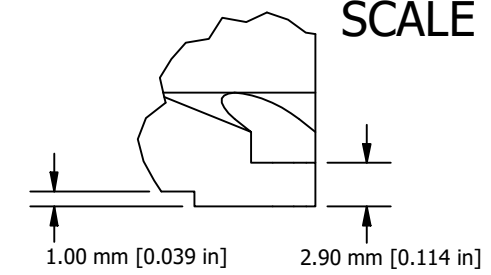
IMU center of measurement marked as datum A. IMU center of measurement is located at X/Y center of part, 10 mm up from bottom plane of feet. Right handed coordinate system with positive Z-axis pointing down towards bottom surface of part.



CONNECTOR PINOUT		
Pin	Primary	Auxiliary
1	Sync In 1	RESV
2	GPS PPS 1	RESV
3	Sync Out 1	RESV
4	RX1+	RX2+
5	RX1-	RX2-
6	TX1-	TX2-
7	TX1+	TX2+
8	Signal Gnd 1	Signal Gnd 2
9	V+ _In (Power In)	V+ _Out
10	V- _In (Power Gnd)	V- _Out



DETAIL D
SCALE 2 : 1



DETAIL A
SCALE 3 : 1

UNLESS OTHERWISE SPECIFIED
GENERAL TOLERANCES:
± 0.1 MM [± 0.004 IN]
HOLE DIAMETERS:
± 0.05 MM [± 0.002 IN]
ANGLES: ± 0.5°
ENCLOSURE MATERIAL: ANODIZED ALUMINUM - DARK GRAY
ANODIZED SURFACE THICKNESS:
LESS THAN 0.0127 MM [0.0005 IN]

VECTORN AV		10501 Markison Rd. Dallas, TX 75238 512-772-3615	
TITLE: VN-310		REV: 2.0	
DESIGNED BY: CM - 12/18/2020		APPROVED BY: LM - 5/12/2020	
DRAWING REVISION HISTORY			
REV	DESCRIPTION	DATE	APPROVED
1.0	UPDATED MODEL TO REV 1	10/1/2019	LM
2.0	UPDATED MODEL TO REV 2	5/12/2020	LM

Anodization has been milled off the bottom surface of the four feet. Electrical resistivity of primary or auxiliary connector housing to surface of feet is less than 2.5 mOhms.

10 9 8 7 6 5 4 3 2 1