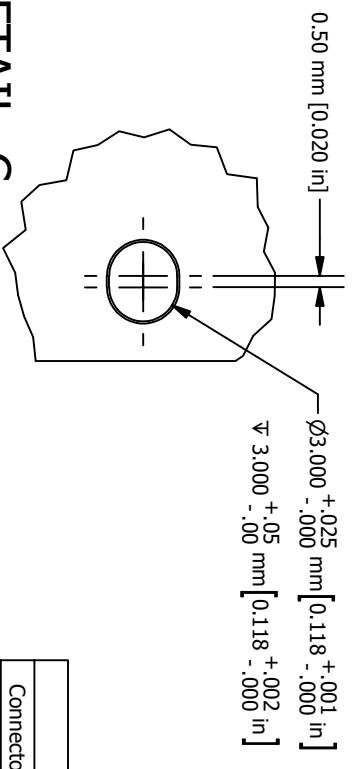


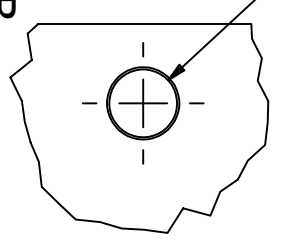
| Connector | Purpose  | Voltage   |
|-----------|--|-----------|
| Primary   | Input power & primary communications                   | 12 - 34 V |
| Auxiliary | Optional output power and RS-422 for auxiliary sensors | 12 - 34 V |
| GPS       | GPS RF Input with 5V output to power active antenna    | 5V ±0.1V  |

**CONNECTORS**

| Connector | Manufacturer | P/N                    | Mating P/N           |
|-----------|--------------|------------------------|----------------------|
| Primary   | Fischer      | UR02W07F010PBK3E2AB    | UP01L07M0105BK3Z22ZB |
| Auxiliary | Fischer      | UR02W07F010PBK1E2AB    | UP01L07M0105BK1Z22ZB |
| GPS       | Samtec       | MH113-01SBI-MH1RP-0050 | STRAIGHT SMA PLUG    |



**DETAIL C**  
SCALE 3 : 1

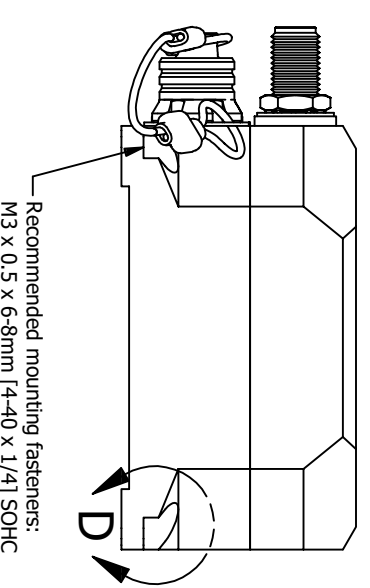


**DETAIL B**  
SCALE 3 : 1

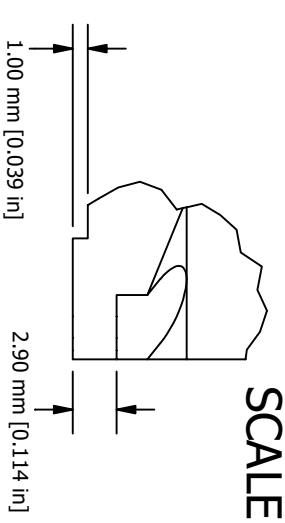
Alignment hole designed for 3mm dowel pin.  
Hole on primary connector side is circular. (Detail B)  
Hole on auxiliary connector side is oval shape. (Detail C)  
Recommended Dowel Pin:  
McMaster-Carr P/N: 93600A267

Ground Washer (CuZn37)

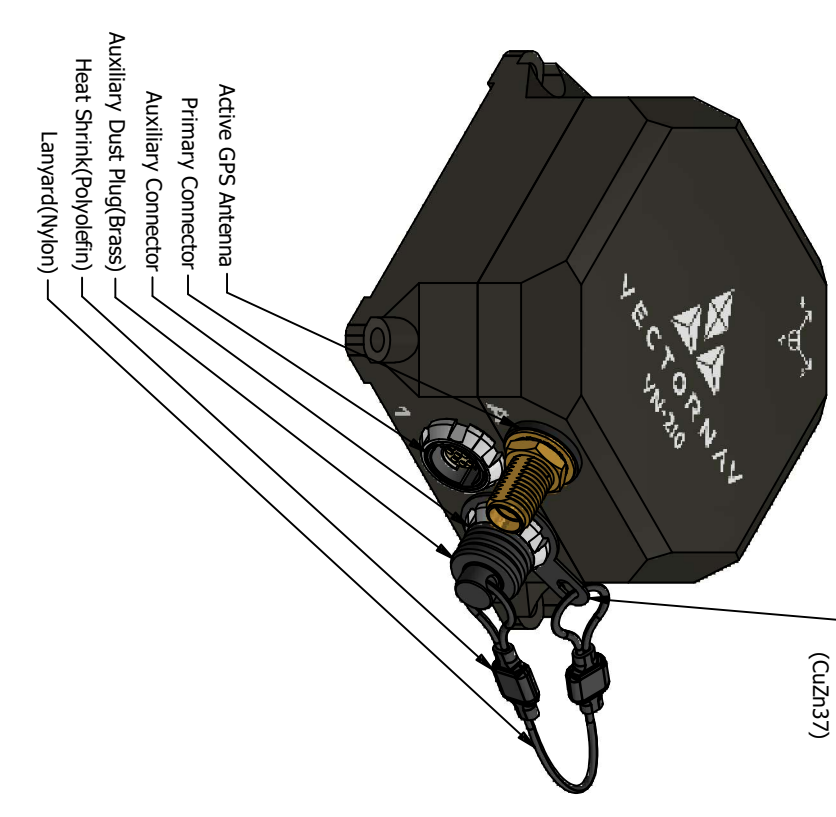
| Pin | CONNECTOR PINOUT   |
|-----|--------------------|
| 1   | Primary Sync In 1  |
| 2   | GPS PPS 1          |
| 3   | Sync Out 1         |
| 4   | RX1+               |
| 5   | RX1-               |
| 6   | TX1-               |
| 7   | TX1+               |
| 8   | Signal Gnd 1       |
| 9   | V+ _In (Power In)  |
| 10  | V- _In (Power Gnd) |
|     | Auxiliary RESV     |
|     | RESV               |
|     | RESV               |
|     | RX2+               |
|     | RX2-               |
|     | TX2-               |
|     | TX2+               |
|     | Signal Gnd 2       |
|     | V+ _Out            |
|     | V- _Out            |



**DETAIL D**  
SCALE 2 : 1



**DETAIL A**  
SCALE 3 : 1



10501 Markison Rd.  
Dallas, TX 75238  
512-772-3615

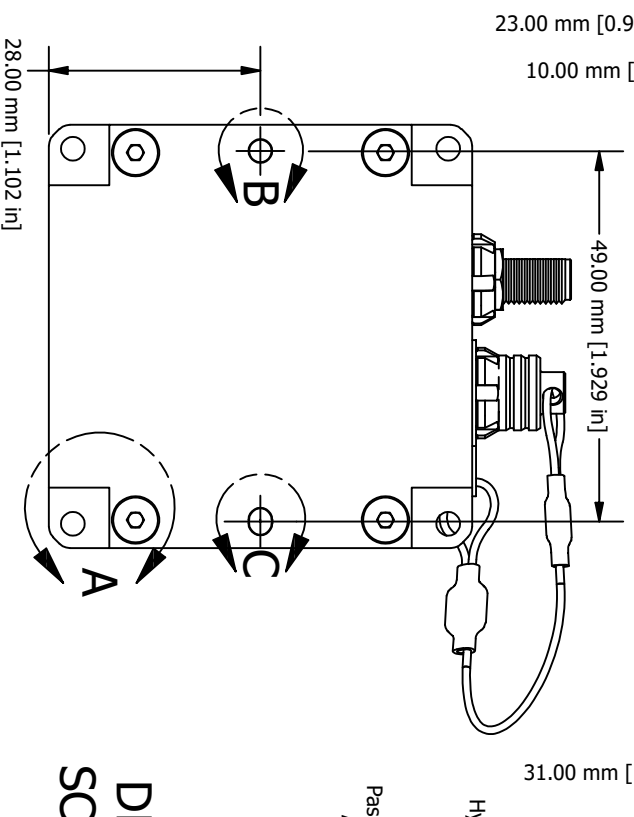
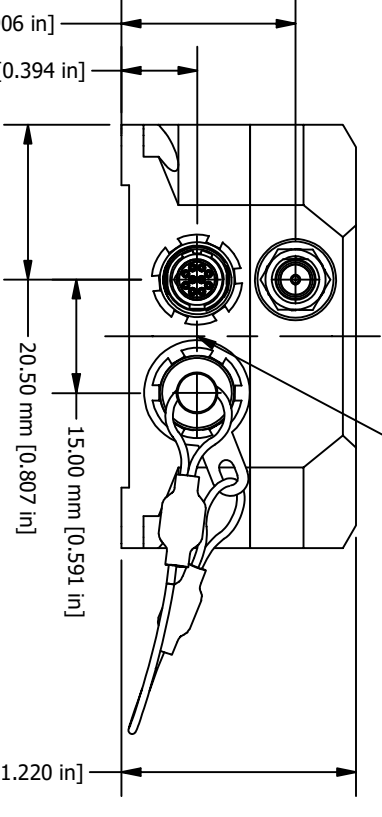
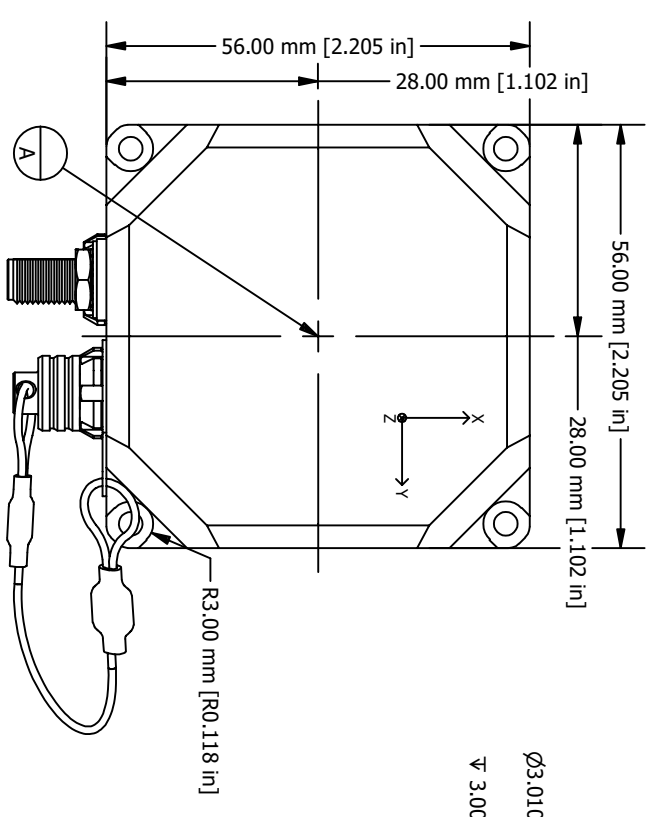
TITLE: VN-210 APPROVED BY: LM - 5/12/2020 REV: 2.0

DESIGNED BY: CM - 12/18/2020 DRAWING REVISION HISTORY

| REV | DESCRIPTION            | DATE      | APPROVED |
|-----|------------------------|-----------|----------|
| 1.0 | UPDATED MODEL TO REV 1 | 10/1/2019 | LM       |
| 2.0 | UPDATED MODEL TO REV 2 | 5/12/2020 | LM       |

UNLESS OTHERWISE SPECIFIED  
GENERAL TOLERANCES:  
± 0.1 MM (± 0.004 IN)  
HOLE DIAMETERS:  
± 0.05 MM (± 0.002 IN)  
ANGLES: ± 0.5°  
ENCLOSURE MATERIAL: ANODIZED ALUMINUM - DARK GRAY  
ANODIZED SURFACE THICKNESS: LESS THAN 0.0127 MM (0.0005 IN)

Anodization has been milled off the bottom surface of the four feet.  
Electrical resistivity of primary or auxiliary connector housing to surface of feet is less than 2.5 mΩ/mms.



10 9 8 7 6 5 4 3 2 1